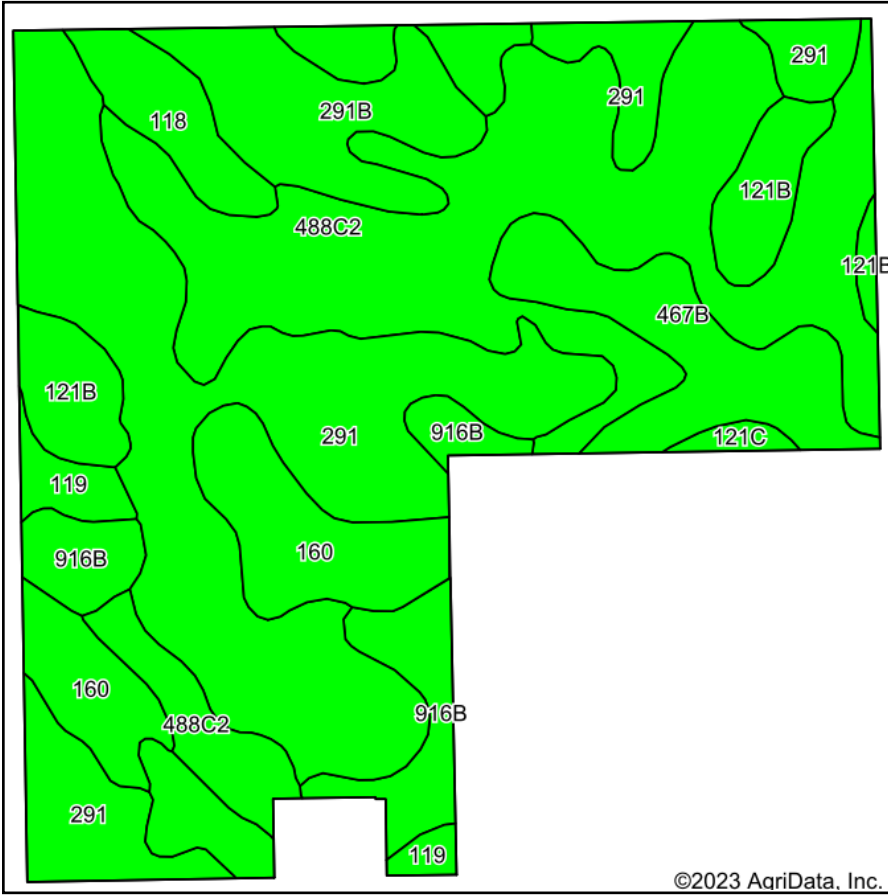
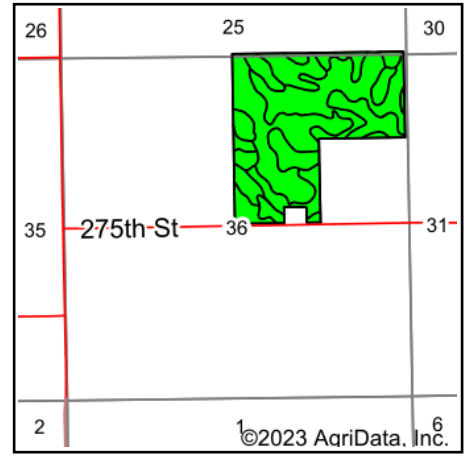


Soils Map



Soils data provided by USDA and NRCS.

©2023 AgriData, Inc.



State: **Iowa**
 County: **Muscatine**
 Location: **36-76N-4W**
 Township: **Cedar**
 Acres: **118.07**
 Date: **11/17/2023**



Maps Provided By:



© AgriData, Inc. 2023

www.AgriDataInc.com



Area Symbol: IA139, Soil Area Version: 29

Code	Soil Description	Acres	Percent of field	CSR2 Legend	Non-Irr Class *c	CSR2**	CSR	
291	Atterberry silt loam, 1 to 3 percent slopes	36.61	31.0%		Iw	85	95	
488C2	Newvienna silt loam, 5 to 9 percent slopes, moderately eroded	33.48	28.4%		IIIe	77	71	
467B	Radford silt loam, 2 to 5 percent slopes	9.93	8.4%		IIw	75	76	
160	Walford silt loam, 0 to 2 percent slopes	9.34	7.9%		IIw	82	65	
291B	Atterberry silt loam, 2 to 5 percent slopes	7.54	6.4%		Ile	85	90	
916B	Downs silt loam, sandy substratum, 2 to 5 percent slopes	6.76	5.7%		Ile	88	77	
121B	Tama silt loam, 2 to 5 percent slopes	5.98	5.1%		Ile	95		
118	Garwin silty clay loam, 0 to 2 percent slopes	5.81	4.9%		IIw	90	95	
119	Muscatine silty clay loam, 0 to 2 percent slopes	2.03	1.7%		Iw	100	100	
121C	Tama silt loam, 5 to 9 percent slopes	0.59	0.5%		IIIe	90		
Weighted Average						1.96	82.9	*.

**IA has updated the CSR values for each county to CSR2.

*- CSR weighted average cannot be calculated on the current soils data, use prior data version for csr values.

*c: Using Capabilities Class Dominant Condition Aggregation Method

Soils data provided by USDA and NRCS.